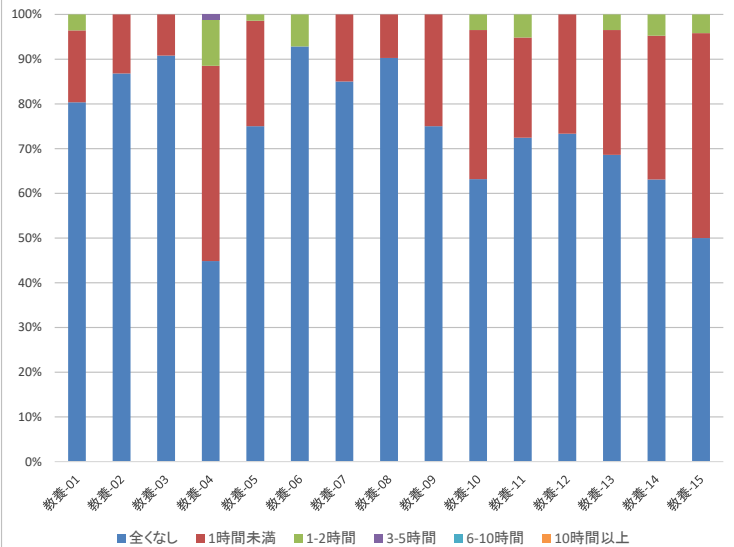
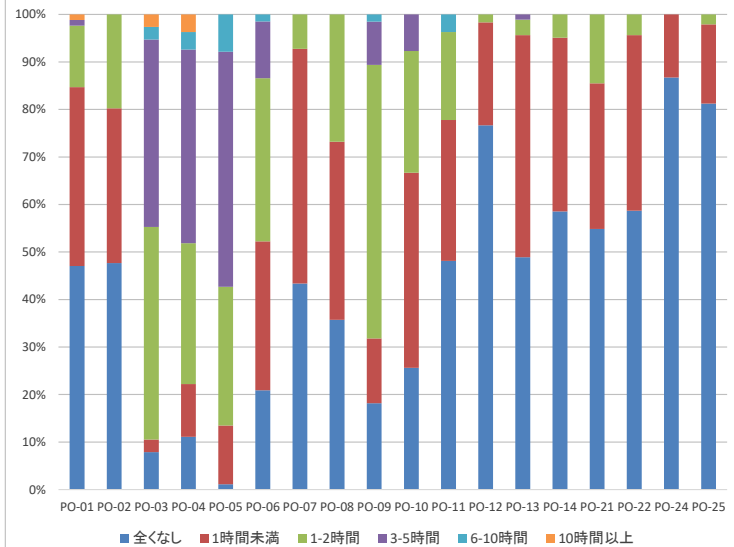


2019授業評価アンケート_学修時間(17予習・18復習) ※開講学年・分野別3-1

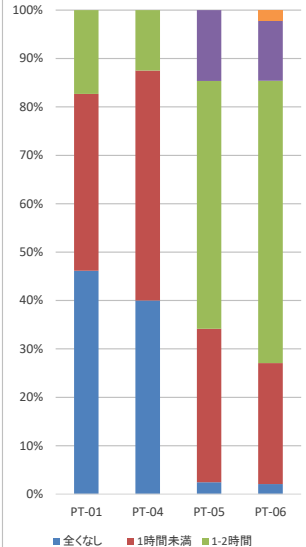
教養科目_予習時間



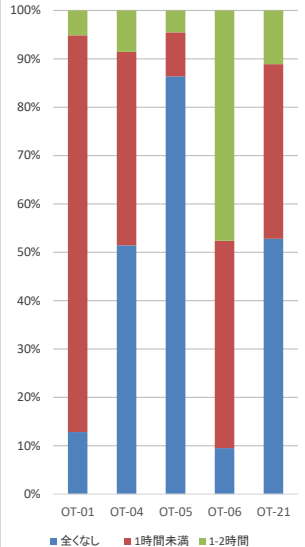
専門基礎科目(1年次対象)_予習時間



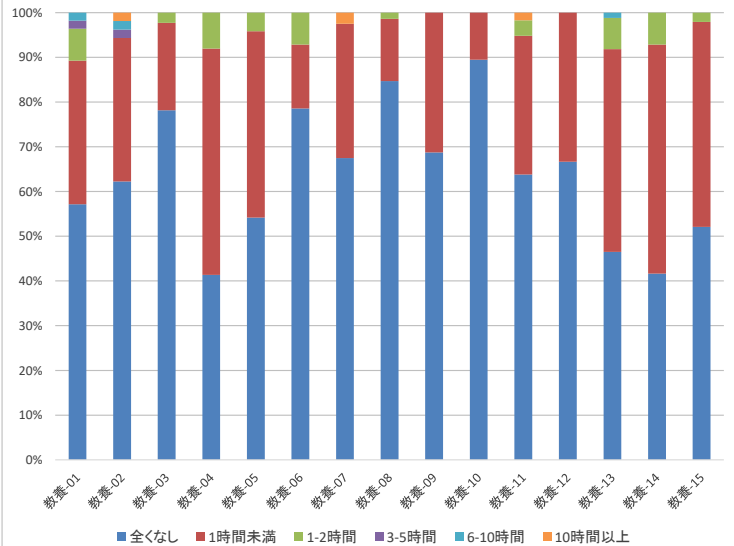
PT専門科目(1年次対象)_予習時間



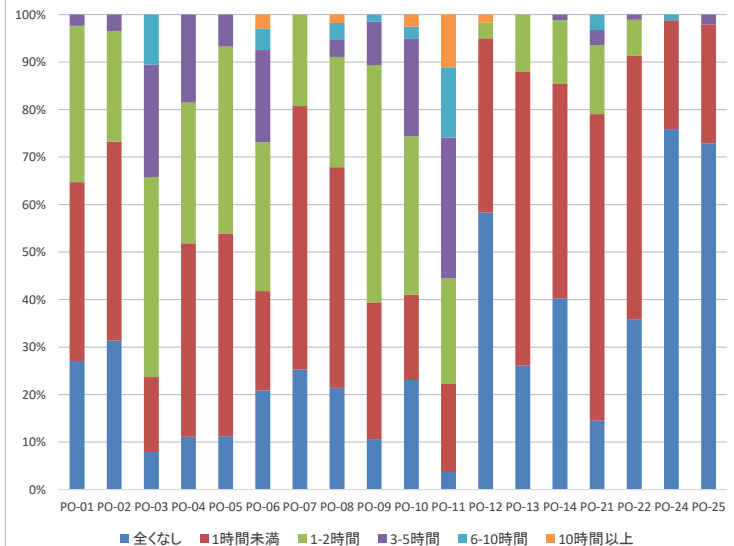
OT専門科目(1年次対象)_予習時間



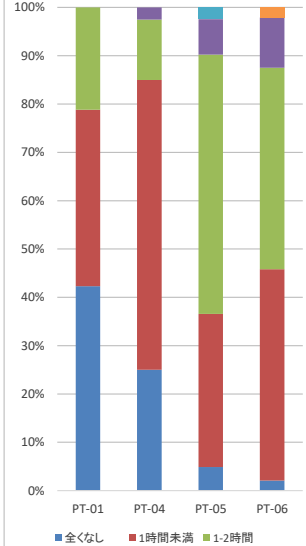
教養科目_復習時間



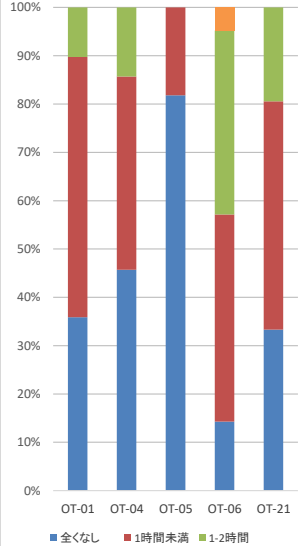
専門基礎科目(1年次対象)_復習時間



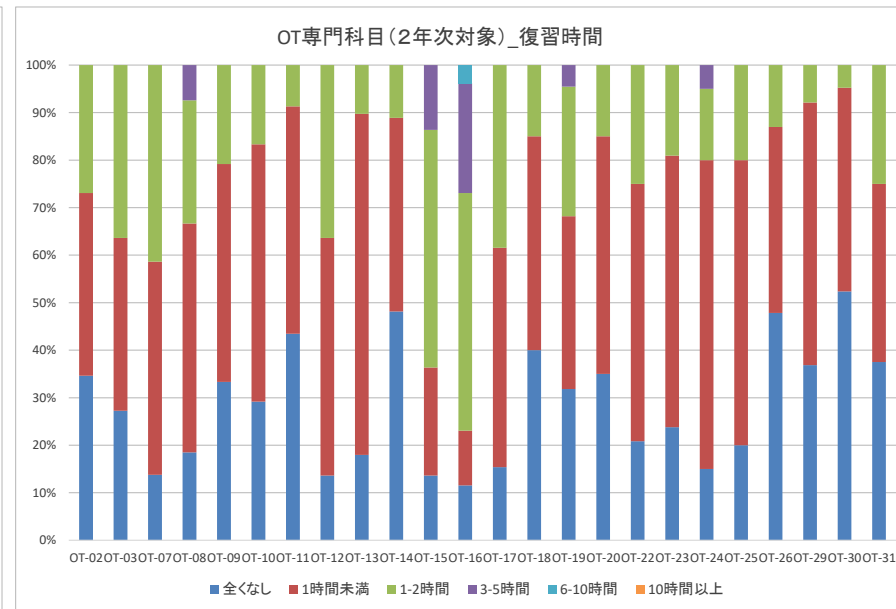
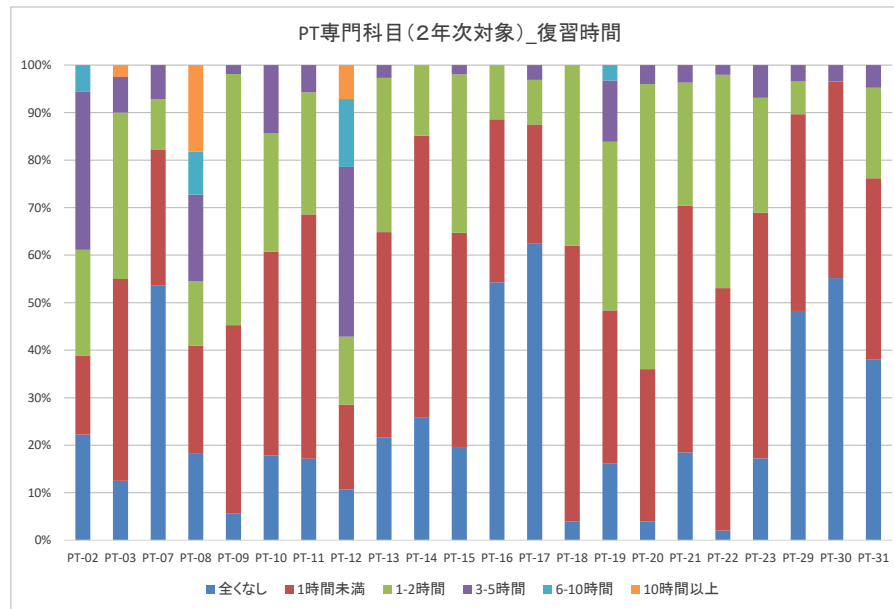
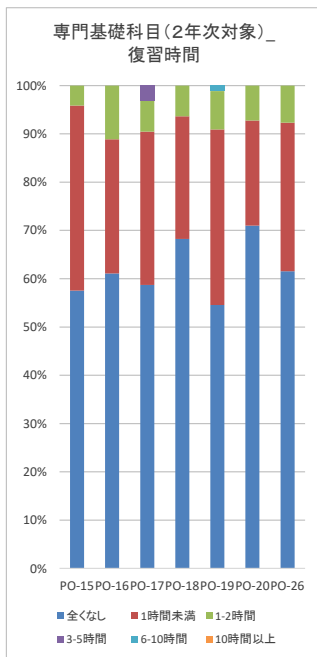
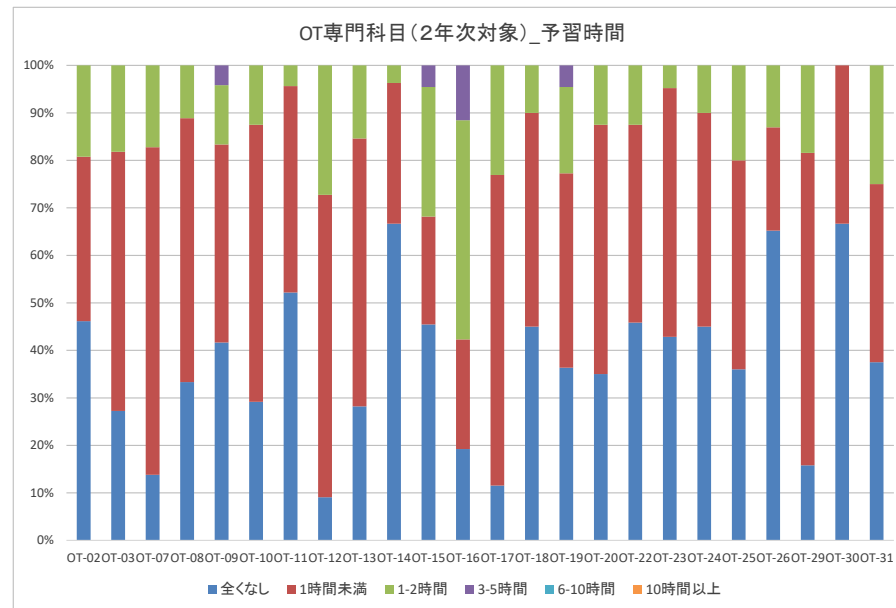
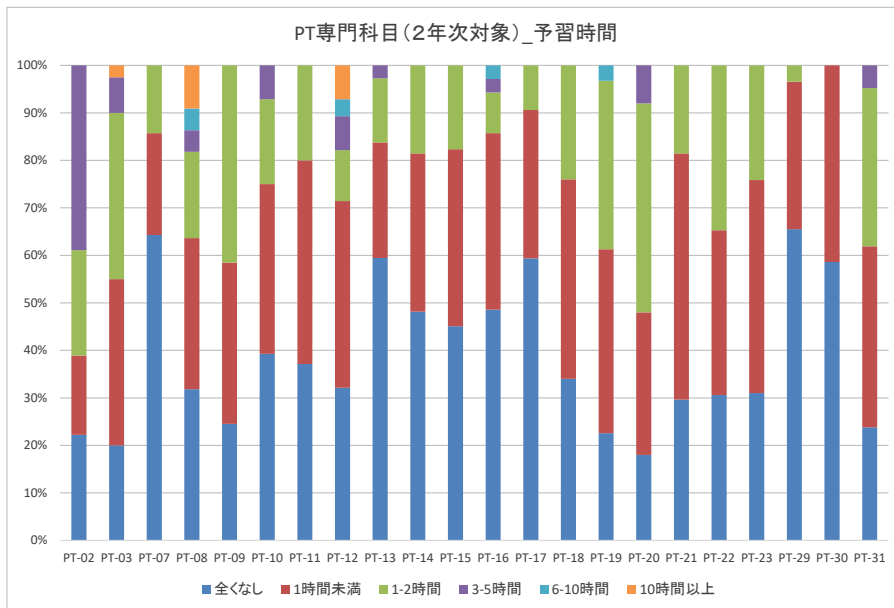
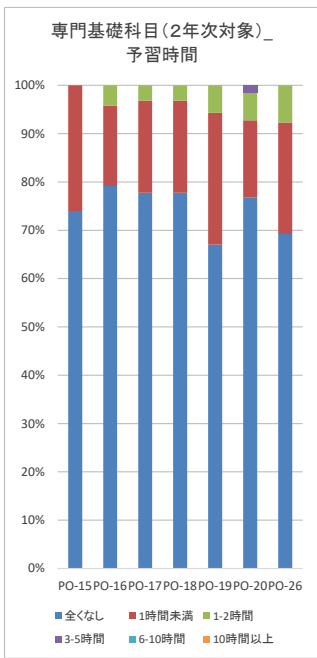
PT専門科目(1年次対象)_復習時間



OT専門科目(1年次対象)_復習時間



2019授業評価アンケート_学修時間(17予習・18復習) ※開講学年・分野別3-2



2019授業評価アンケート_学修時間(17予習・18復習) ※開講学年・分野別3-3

